



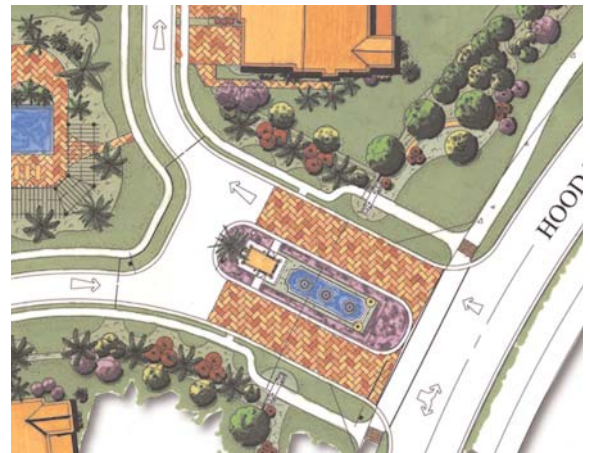
Land Use and Zoning Representation

Frenchman's Reserve by Toll Brothers, Inc. Palm Beach Gardens

Portfolio of Projects

Frenchman's Reserve, PBC
 Royal Palm Polo, PBC
 Equus Equestrian
 Community, PBC
 St. Andrews Preparatory School,
 City of Boca Raton
 Woodfield Golf and Country Club
 City of Boca Raton
 Addison Reserve Golf and
 Country Club, PBC
 Colony Club Apartments, PBC
 Bristol Point, PBC
 Frenchman's Creek, PBG
 Whitmarsh Reserve,
 Martin County
 Vista Center, City of West Palm
 Isles of Wellington
 Baywinds, City of West Palm
 Mariner Sands
 Turtle Cay, Riviera Beach
 Drexel Park
 Verona Palms, PBC

The complicated and costly process of rezoning parcels of land makes even the most veteran developers shy away from the zoning process in Florida. It is a given that available land is at a premium. The land that is available may have constraints due to environmental conditions and zoning regulations. At Land Design South, we have made the maze of approvals a workable, do-able, set of challenges. Through the years, our principals and planners have developed an understanding of what makes a successful project. We know the value of meeting with the decision makers. We promote the idea of developing a working relationship with the local landowners that are affected, and we have a strong relationship with the government planners who ultimately approve zoning changes. Experience in land use and rezoning in Florida cannot be underplayed. The time and the years of developing an understanding of what works is the single most important factor in making a dream project a reality.



Above, Pod H rendering for Frenchman's Reserve. Right, Frenchman's Reserve by Toll Brothers, Inc.



2101 Centrepark West Drive, Suite 100
 West Palm Beach, Florida 33409
 Ph: 561.478.8501 | Fax: 561.478.5012

1100 St. Lucie West Blvd., Suite 103A
 Port St. Lucie, Florida 34986
 Ph: 772.871.7778 | Fax: 772.871.9992

www.landdesignsouth.com
 e-mail: general@landdesignsouth.com